

Background on Siteground

Siteground.com is a typical Fantastico host and one of the Tiki friendly hosts so it is used as an example for this documentation. All other Fantastico hosts will be very similar. Shared hosting provides mainly an inexpensive, easy hosting service for low traffic wikis. Their customer service is very good, and their interface is user friendly, but their servers are heavily loaded and sometimes tiki performance is kinda slow. Overall a good bet for a starter wiki host.

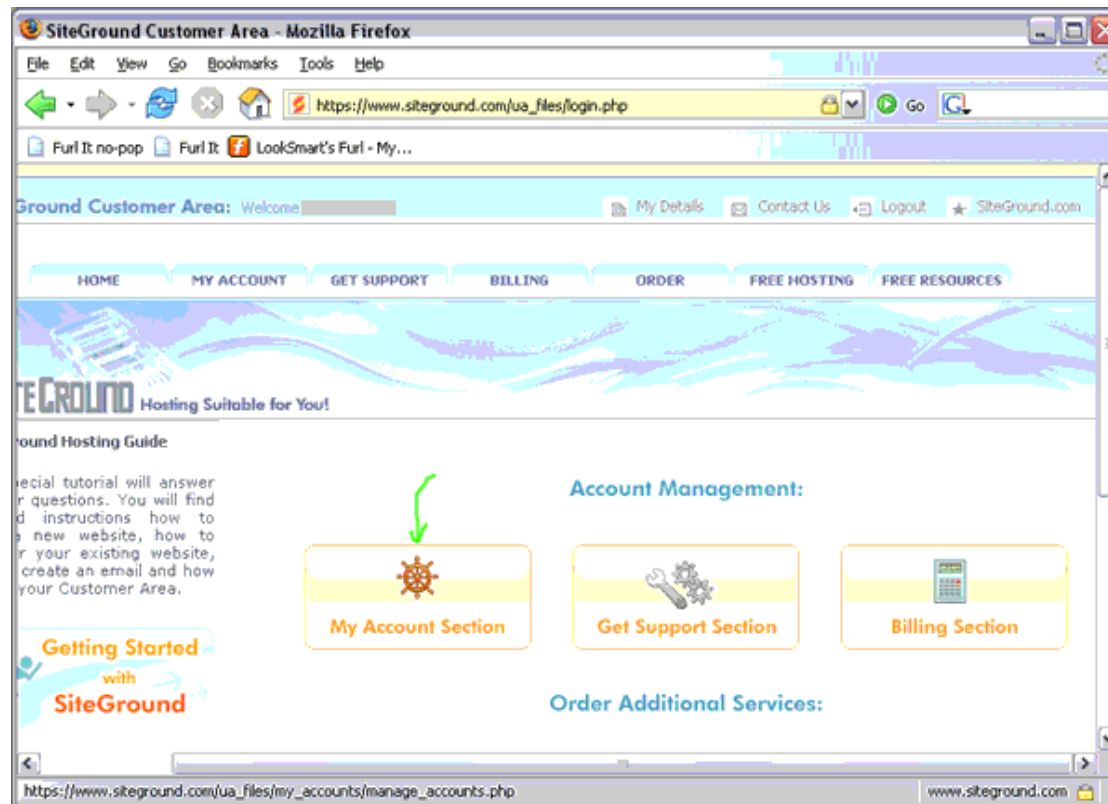
- Includes CPanel and Fantastico - includes installation through fantastico and webanalysis and other tools through cpanel

Installation

After securing an account and choosing a domain name, installation is straightforward. Installation is either install by FTP, or with Fantastico with siteground you cannot use SSH.

Manage Your Account.

cpanel is a utility that allows you to manage your site without knowing unix or programming. To find cpanel, login, and click as shown below.



Access CPanel

You'll see the following options. Click on cpanel and login.

The screenshot shows the SiteGround Customer Area in Mozilla Firefox. The browser address bar displays the URL: https://www.siteground.com/ua_files/index.php?requi=my_accounts/mana. The page features a navigation menu with links: HOME, MY ACCOUNT, GET SUPPORT, BILLING, ORDER, FREE HOSTING, and FREE RESOURCES. Below the navigation is a banner for "SITEGROUND Hosting Suitable for You!".

The main content area is titled "My Account Section" and includes a "Hosting Accounts" table. A green arrow points to the "CPanel" column, which contains a "Go" button.

Name: ^	Created:	Expires:	Renew:	Extras:	CPanel:	SiteBuilder:	Manages:
	21/Jan/07	21/Jan/09	Renew	Add	Go	Go	Manage

Access Fantastico

When CPanel comes up, ignore most of it for now. Click on Fantastico at the bottom.

The screenshot shows the cPanel X interface. At the top, it says "cPanel X" and "CPANEL 10". Below that, it says "Welcome" and "Last login from: 127.0.0.1". A message says "Please update your contact information here.".

General account information:

Hosting package	siteground
Shared Ip Address	
Subdomains	4 / unlimited
Parked Domains	3 / unlimited
Addon Domains	3 / 3
MySQL Databases	5 / unlimited
Postgresql Databases	0 / unlimited
Disk Space Usage	228.95 Megabytes
MySQL Disk Space	19.67 Megabytes
Disk space available	249771.05 Megabytes
Bandwidth (this month)	48.66 Megabytes
Email Accounts	0 / unlimited
Email Forwarders	0
Auto-responders	0
Email Filters	0
Ftp Accounts	3 / unlimited

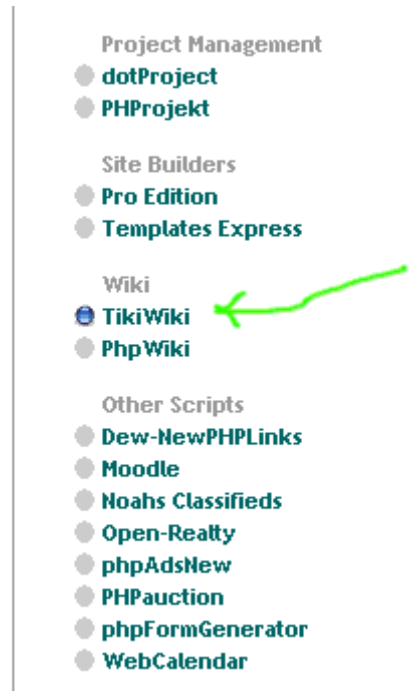
General server information:

Operating system	Linux
Kernel version	2.6.9-42.0.3.ELsmp
Machine Type	i686
Apache version	1.3.37 (Unix)
PERL version	5.8.7
Path to PERL	/usr/bin/perl
Path to sendmail	/usr/sbin/sendmail

The grid of icons includes: Mail, Webmail, Parked Domains, Addon Domains, FTP Manager, File Manager, Disk Space Usage, Password Protect Directories, Error pages, Subdomain, MySQL, MySQL@ Databases, PostgreSQL Databases, Redirects, FrontPage@ Extensions, Web/FTP Stats, Raw Access Logs, Raw Log Manager, Error log, Subdomain Stats, PhpMyChat, CGI Center, Scripts Library, Cron jobs, Network Tools, MIME Types, Apache Handlers, HotLink Protection, Index Manager, IP Deny Manager, Change Language, Statistics Software Configuration, and Fantastico. The Fantastico icon is highlighted with a green circle and an arrow.

Install Tiki

Fantastico is an installer. You'll use it to install Tiki. Once fantastico comes up, click on Tiki Wiki CMS Groupware.



Then, select new installation. Notice for example that Tiki has been installed on karateforge.com. This same tool is used for future upgrades and remembers past installations.

TikiWiki



Short description: TikiWiki is designed to be an international, clean and extensible Content Management System and Groupware that can be used to create all sorts of web applications, sites, portals, intranets and extranets. TikiWiki also works great as a web-based collaboration tool. TikiWiki has a lot of native options and sections that you can enable/disable as you need them.

Homepage: <http://www.tikiwiki.org/>

TikiWiki support forum

(We are not associated with the support forum)

New Installation (1.9.7)

Disk space required: 42.96 MB

Disk space available: 249770.5 MB



Current installations:

	Visit site Remove
karateforge.com/ (1.9.7)	Visit site Remove
	Visit site Remove
	Visit site Remove Upgrade to 1.9.7

Choose your domain to install. Then click install. Notice that the administrator login is set as admin with password admin.

TikiWiki

Install TikiWiki (1/3)

Installation location

Install on domain

Install in directory

Leave empty to install in the root directory of the domain (access example: <http://domain/>).
Enter only the directory name to install in a directory (for <http://domain/name/> enter **name** only). This directory SHOULD NOT exist, it will be automatically created!

Admin access data

Administrator-username
(you need this to enter the protected admin area)

Password (you need this to enter the protected admin area)

You can change the admin login/password later in the administration area of your TikiWiki installation.

If all goes well, you'll see something similar to the following, and can click "finish".

TikiWiki

Install TikiWiki (2/3)

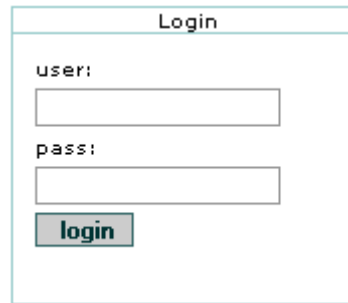
The MySQL database and MySQL user will be created and used for this installation.

- You chose to install in the main directory of the domain how2why4.com.
- The access URL will be: <http://how2why4.com/>.

Click on **Finish installation** to continue.

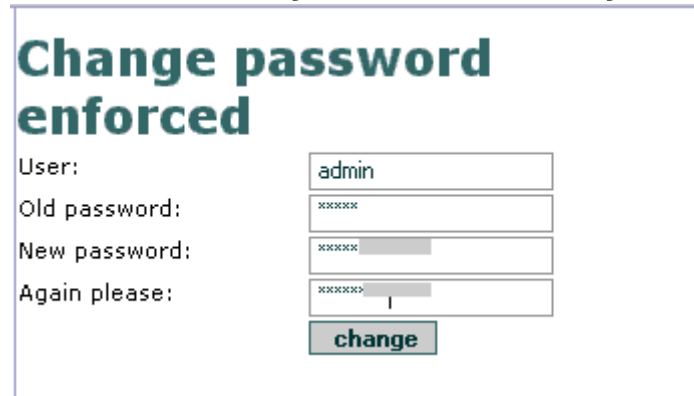
Change Admin's Password

Immediately after fantastic installation, change the admin password before someone else does. Go to your site and login:



A login form titled "Login" with two input fields labeled "user:" and "pass:", and a "login" button.

Use the admin login and admin password. The system will force you to change the password as follows.



A form titled "Change password enforced" with fields for "User:" (admin), "Old password:" (masked with asterisks), "New password:" (masked with asterisks), and "Again please:" (masked with asterisks), and a "change" button.

Installation Complete

Tiki is installed and you're set up as the administrator.

Alias

- Siteground Installation