


Statistics (Stats)

This admin panel includes the Statistics and Analytics admin settings available in Tiki.

To access: Click the **Statistics** icon  on the Admin Panel
or Access **<http://example.org/tiki-admin.php?page=statistics>**

Key features

- Tiki Stats
 - Usage for Tiki and Tiki feature - Good and basic to track website usage.
- Google Analytics and Google Chart (require Google analytics account) - Analytics data.
- Piwik Analytics (require Piwik server) - Analytics data with custom options.

Tiki stats

Data are displayed accordingly to your feature usage. IE: If you don't use a feature you won't see anything for it.
It also include a "Referer Stats" option to track referer to your website.

Tiki stats admin panel

Statistics ⓘ

Configure statistics reporting for your site usage

Apply

Tiki Statistics Google Analytics Piwik Analytics **No Tabs**

Tiki Statistics

Stats ⓘ ▶

Referer Stats ⓘ ▶

Count admin pageviews ⓘ

Apply

Tiki stats user page

Site Stats

Date of first pageview	Wednesday January 27, 2016
Days since first pageview	14
Total pageviews	69
Average pageviews per day (pvs)	4.93
Day with the most pageviews	Sunday January 31, 2016 (18 pvs)
Days with the fewest pageviews	Wednesday January 27, 2016 (2 pvs) Thursday February 4, 2016 (2 pvs) Saturday February 6, 2016 (2 pvs)

Wiki Stats

Wiki Pages	2
Size of Wiki Pages	0.00134 Mb
Average page length	670.00 bytes
Versions	53
Average versions per page	26.50

Google Analytics

See: Google Analytics

Piwik Analytics

For information about Piwik, see: [Piwik Web analytics](#)

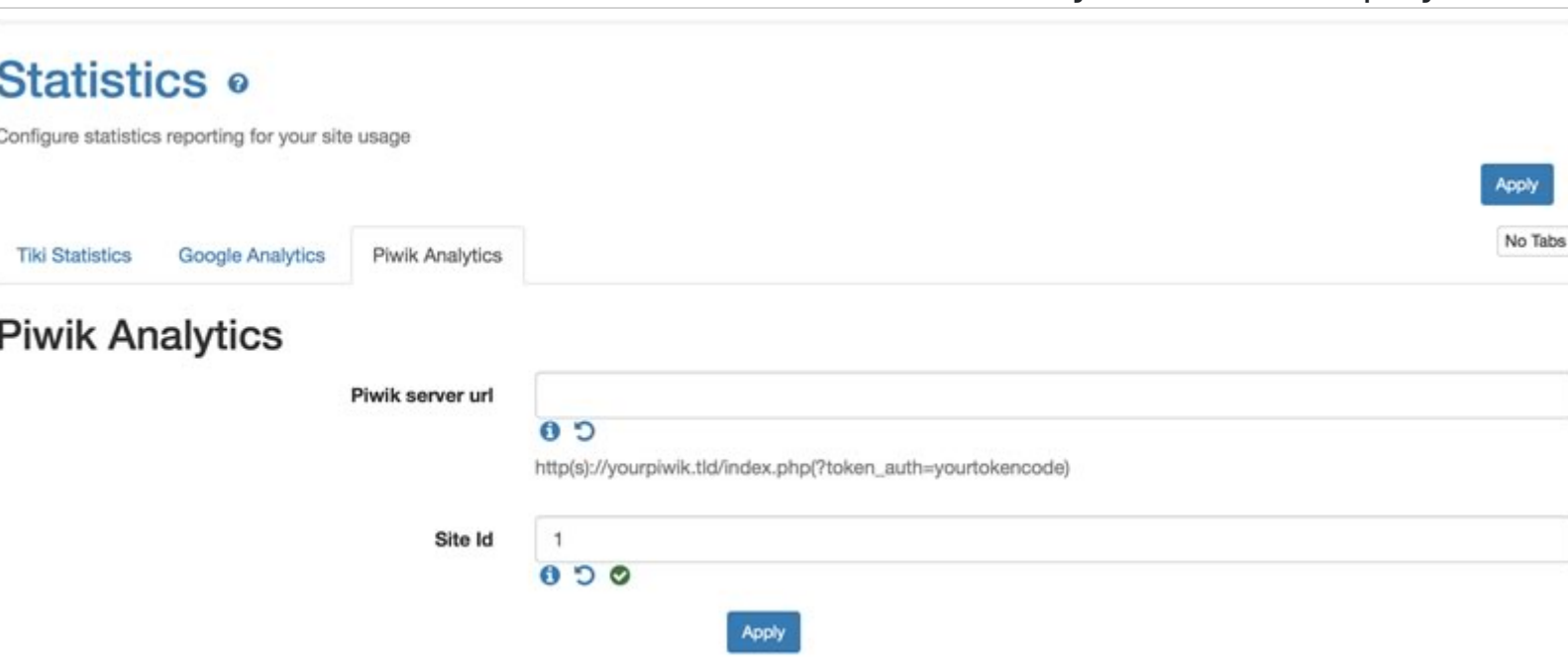
×

⚠ Plugin Piwik

Plugin Piwik is required to use the Piwik feature.

Piwik Analytics admin panel

You need to set the URL to your Piwik server. IE : "http://mypiwik.com".
You need to set the Id of the website you want to display the statistics. IE : "1".



The screenshot shows the 'Statistics' configuration page for Piwik Analytics. At the top left, there is a 'Statistics' header with a sub-header 'Configure statistics reporting for your site usage'. Below this, there are three tabs: 'Tiki Statistics', 'Google Analytics', and 'Piwik Analytics', with 'Piwik Analytics' being the active tab. To the right of the tabs are two buttons: 'Apply' and 'No Tabs'. The main section is titled 'Piwik Analytics' and contains two input fields. The first field is labeled 'Piwik server url' and contains the text 'http(s)://yourpiwik.tld/index.php(?token_auth=yourtokencode)'. Below this field are three icons: an information icon, a refresh icon, and a checkmark icon. The second field is labeled 'Site Id' and contains the number '1'. Below this field are three icons: an information icon, a refresh icon, and a checkmark icon. At the bottom of the form is an 'Apply' button.

×

⚠ Security notice

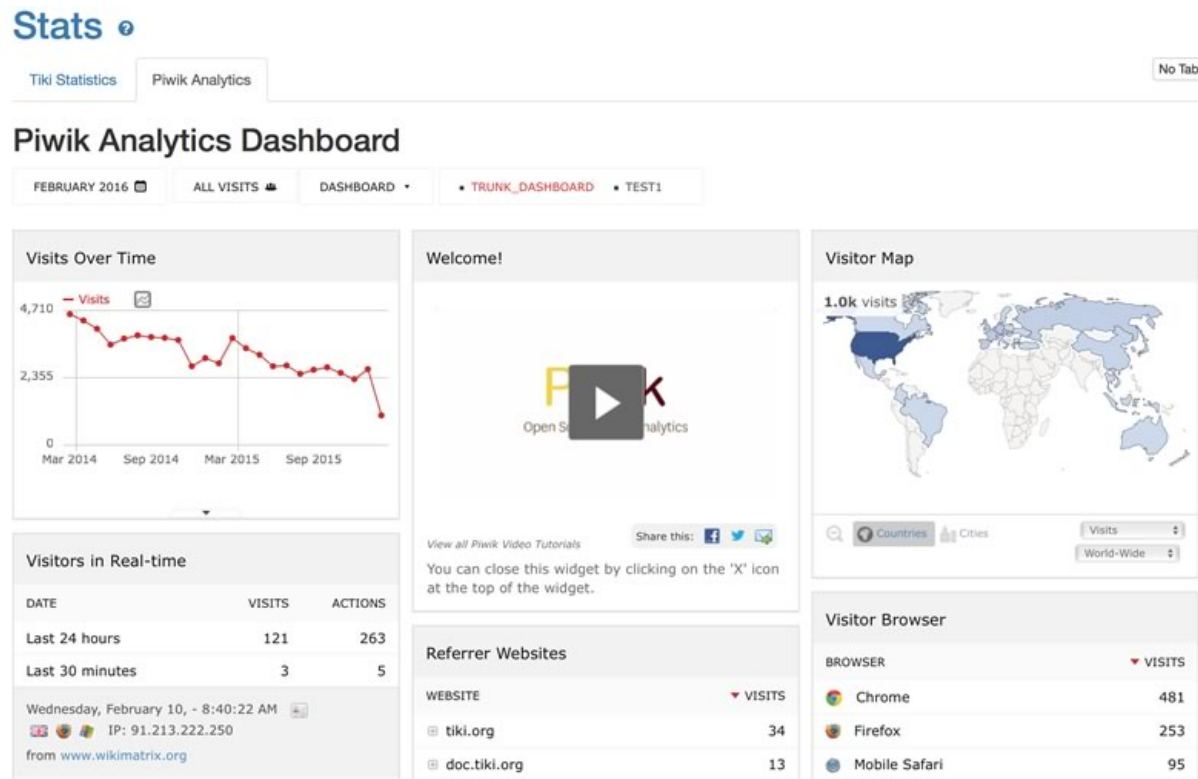
On your Piwik permission panel you must set anonymous can view for the specified website else data won;t be displayed according to the Piwik permissions. You may use a Piwik token (generated in your user panel at Piwik)

if you want to avoid your data to be public by adding it to the url. IE :

http://mypiwik.com/index.php?token_auth=xxxxxxxxxxxxx. __The token will be display in the HTML of the page therefor it is important you keep access to your stats only to trusted users.

Piwik Analytics user page

It is set to Piwik default dashboard but you can customise it accordingly to your need. (check Piwik widget page to review available modules)



Permission

Users with the `tiki_p_view_stats` permission can view several site statistics (stats) from the stats screen, the stats section can be accessed from the main application menu.

See also:

- Search Stats

- Referer Stats

Alias

- Statistics

- Statistics-Admin